

RAW MATERIALS EFFICIENCY

Dave Martin

CEO of Columbus Stainless

Investor and Analyst's Day

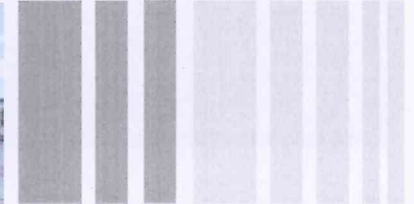
London, 8th November 2011



**COLUMBUS
STAINLESS**
[Pty] Ltd



Availing Stainless Quality in Life.



Developing competitive opportunities from Columbus Stainless' unique raw materials advantage



1. UNIQUE LOCATION



INDUSTRIE DE METAIS



UNIQUE LOCATION

First World Infrastructure

+

Vibrant Emerging Market

=

Huge Investment and Consumption

Potential



UNIQUE LOCATION



SOUTH AFRICA: RESOURCES

Resource	Proven reserves (tons)	% of World Total	World Rank
Chromium	3.1 billion	68%	1
Iron	5.9 billion	6%	8
Nickel*	3.7 million	5%	7

*part of PGM minerals

- **± 90% of world chromium resources situated in Southern Africa.**



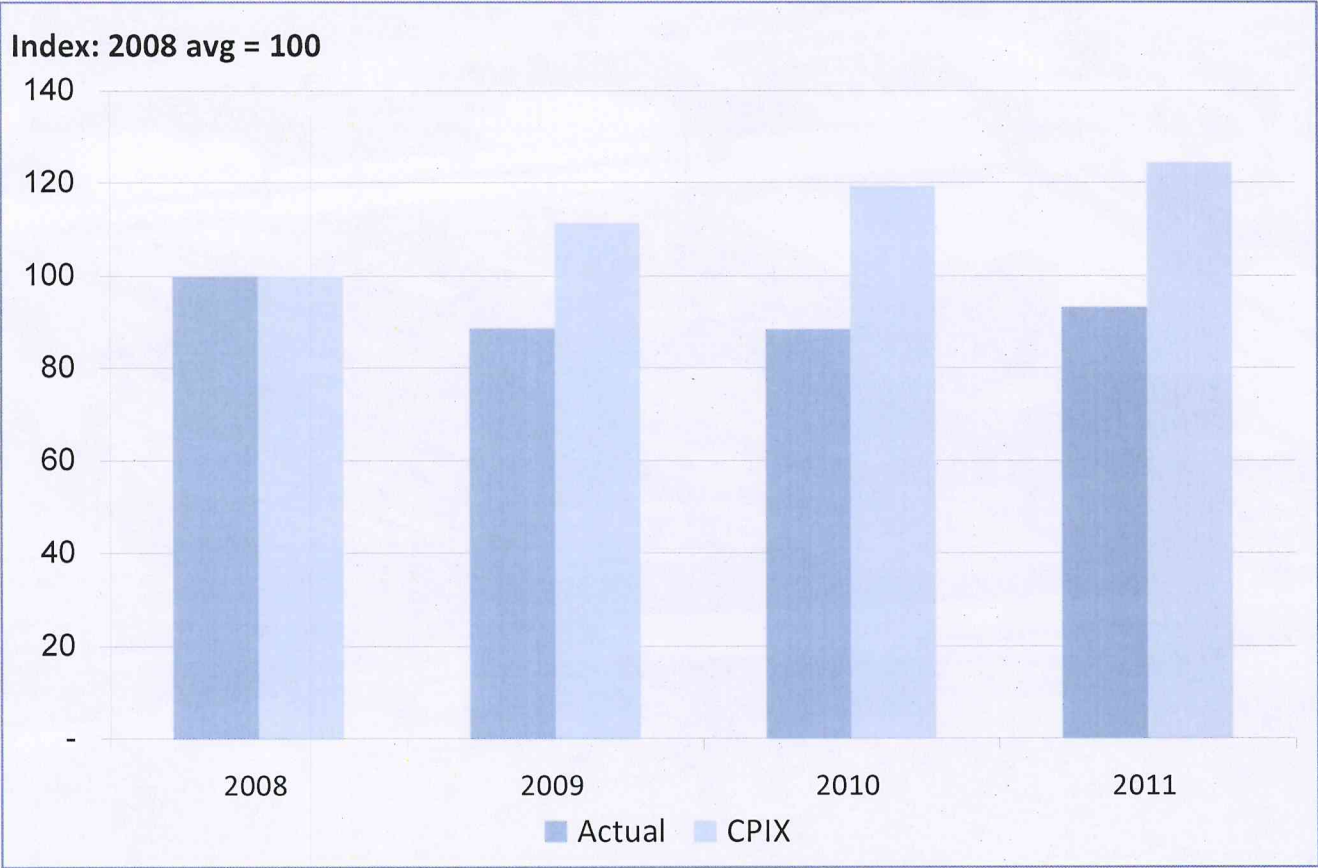


2. UNIQUE SITE & PROCESSES





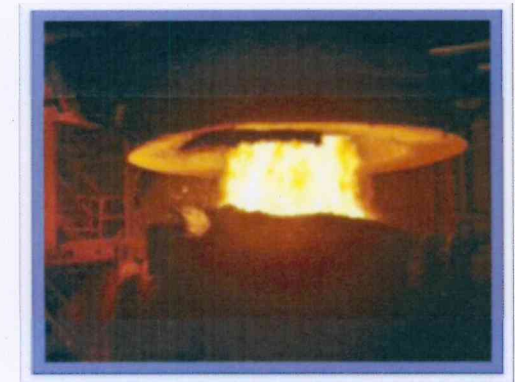
FIXED COST CONTROL





LIQUID FERROCHROME

- Middelburg Ferrochrome on same site - \pm 1200m distance.
- Additional 20% EAF capacity for “free”
- Electricity saving (mitigates any rationing over the next 2 years).
- Raw material and consumables cost saving.



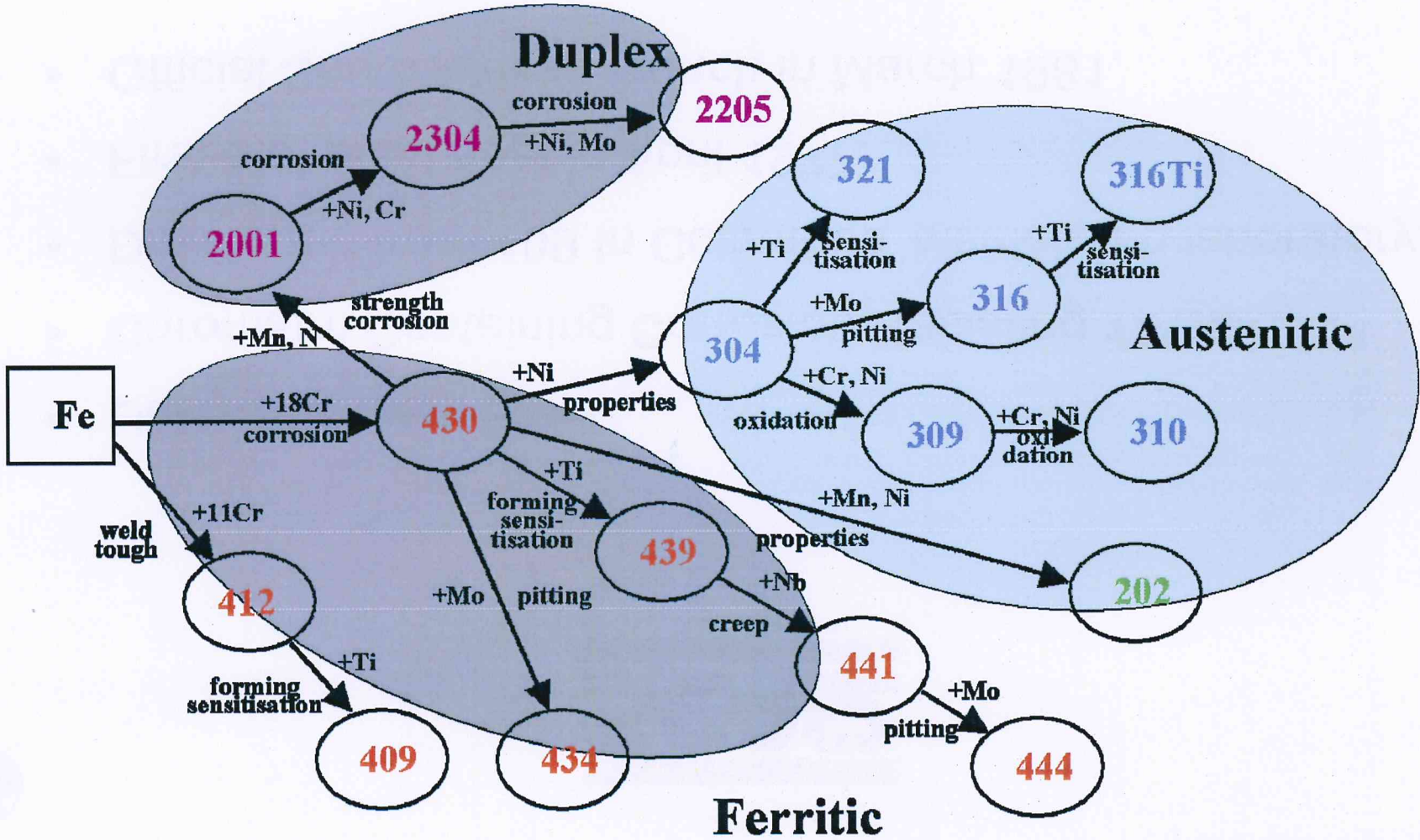


3. UNIQUE PRODUCTS





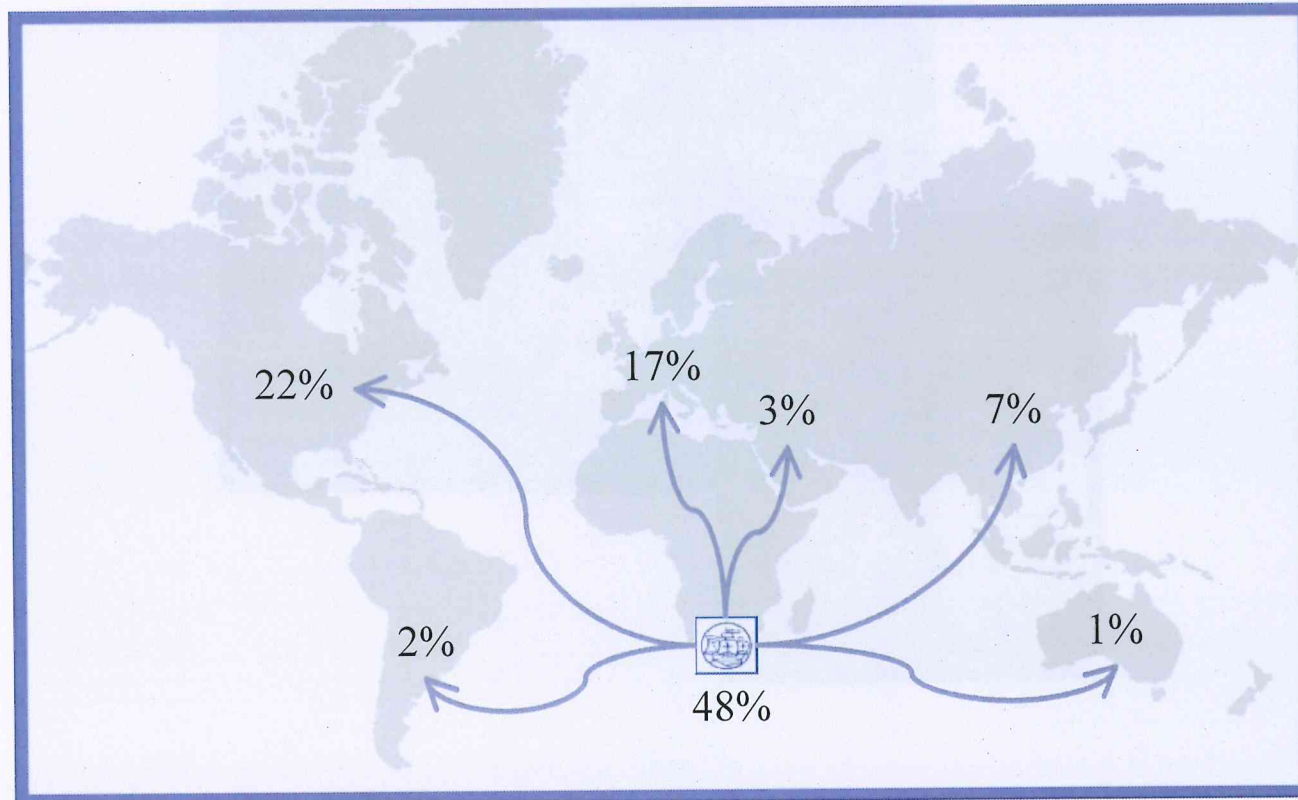
STAINLESS STEEL TYPES





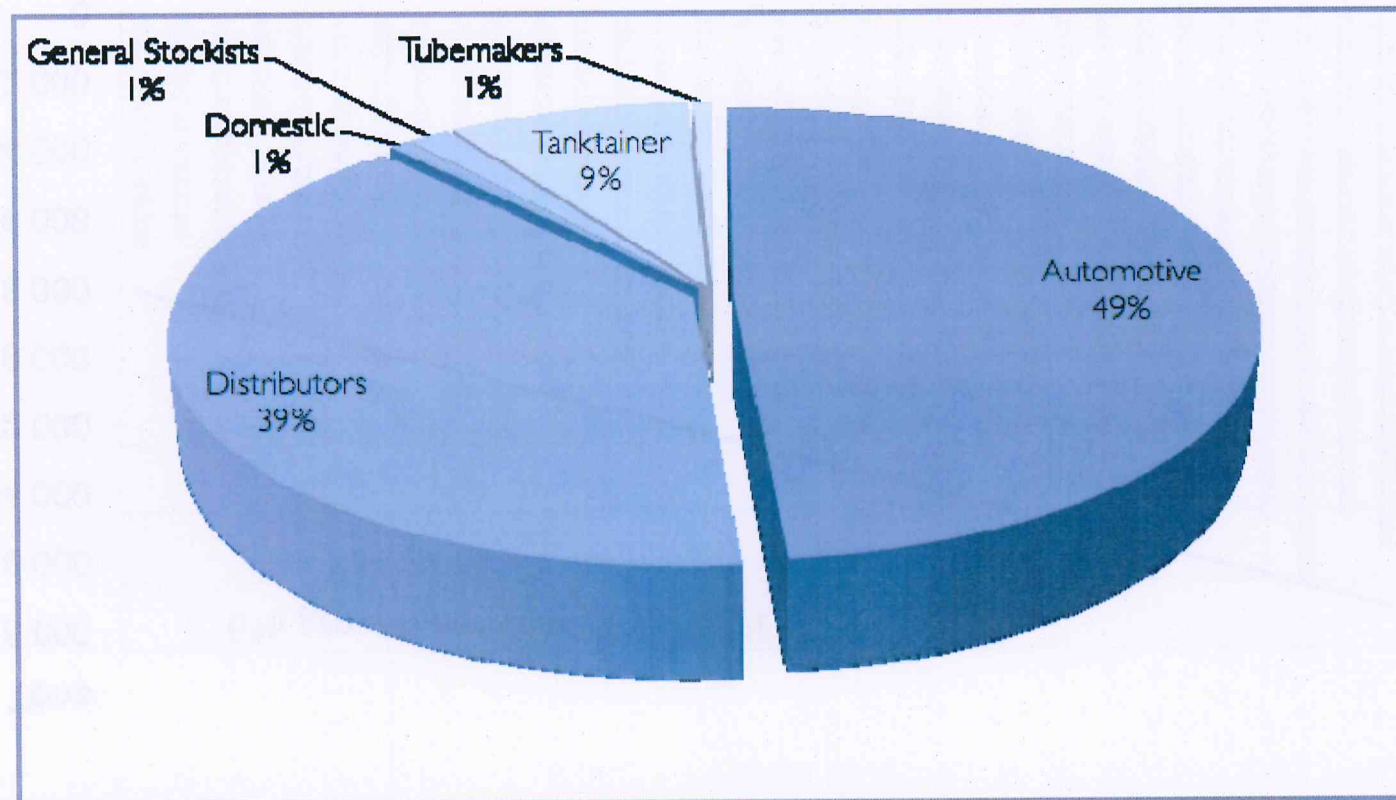
- Rail wagons
- Bus frames, fire trucks
- Conveyor equipment
- Pylons
- Chutes, liners, tanks
- Ladders, walkways, cable racks
- Roofing, cladding, palisade fencing







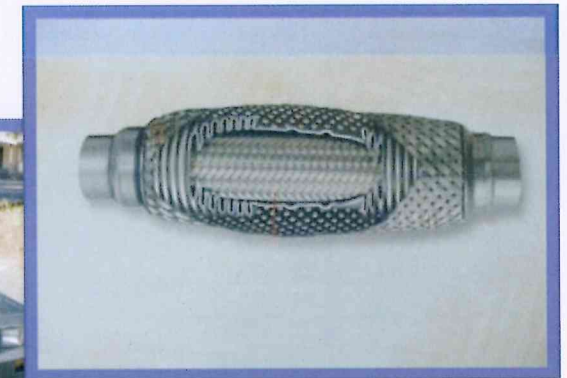
SOUTH AFRICA: STAINLESS STEEL MARKET





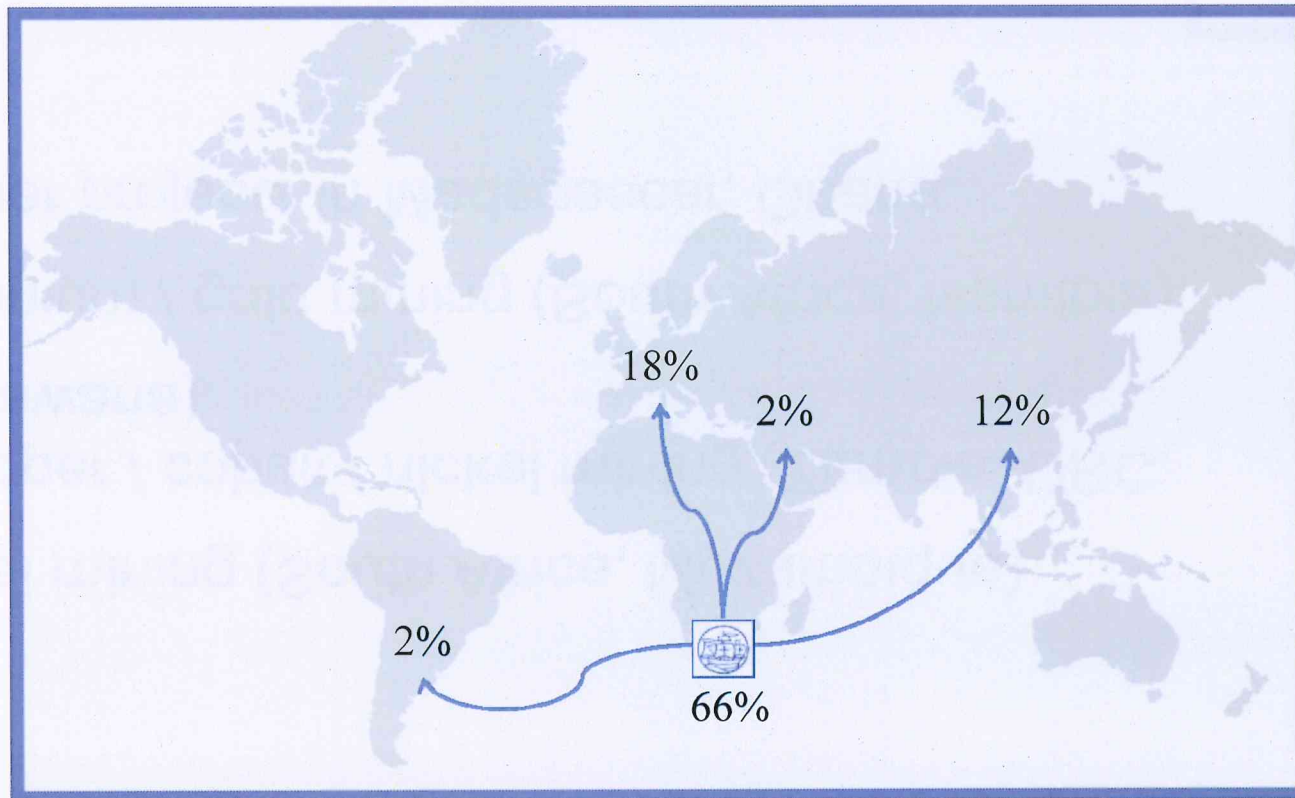
AUTOMOTIVE

- Largest manufacturing sector in SA (6.2% of GDP)
- Automotive Investment Scheme – Government initiative designed to grow and develop automotive sector.





AUTOMOTIVE



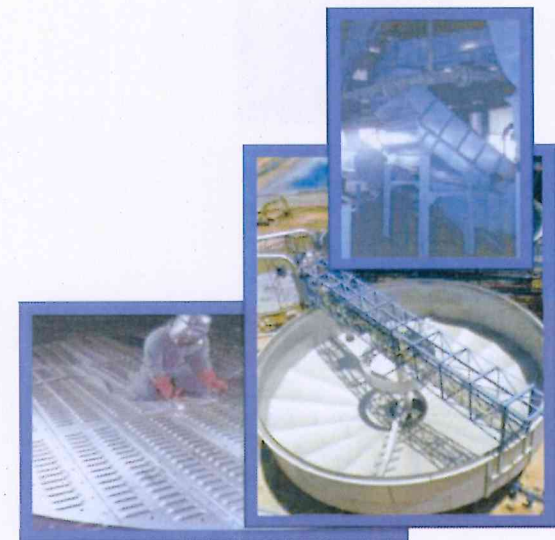
EFFICIENCY



RESOURCES

Applications:

- Hydrometallurgical plants, cathode plates, roofing and racking.
- Silos, hoppers, bunker liners and chutes
- Conveyor systems
- Screens, wash boxes and separators





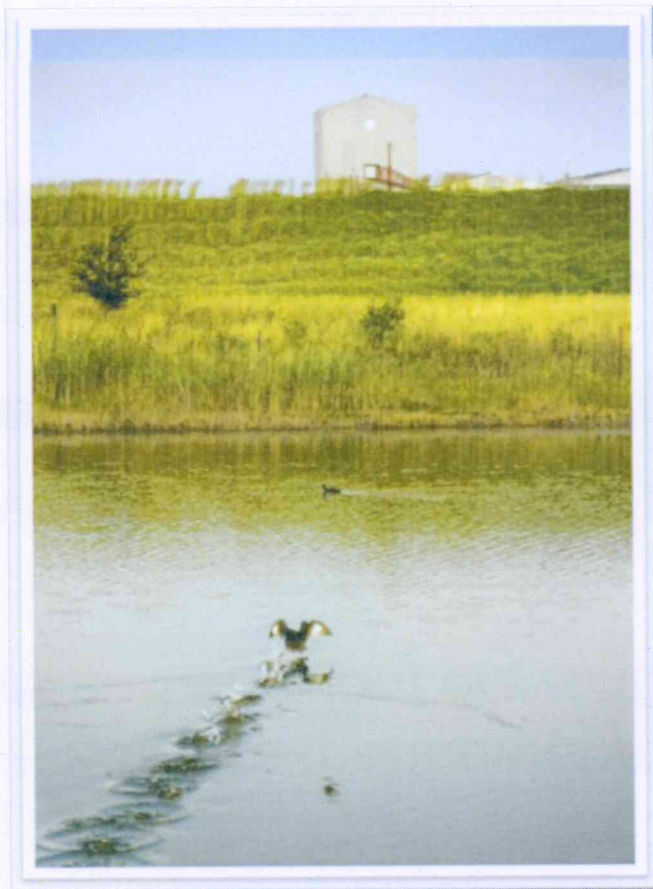
INFRASTRUCTURE

- Electricity generation (Medupi, Kusile)
- Nuclear future
- Rail infrastructure: Electrification masts and cantilevers, electrical enclosures/cabinets and rail fastening systems.





5. UNIQUE INNOVATIONS



COLUMBUS STAINLESS



- BPEO (Best Practical Environmental Option):
 - Zero-effluent policy
 - Closed water reticulation and treatment system
- SASSDA
- Government - Business Localization Project
- Infrastructure focus



COMMUNITY INVOLVEMENT

- Training & education: onsite training, support for local schools (infrastructure and equipment).
- Sport sponsorship and support.
- HIV / Aids awareness: training and support
- MSI: Entrepreneurship, employment

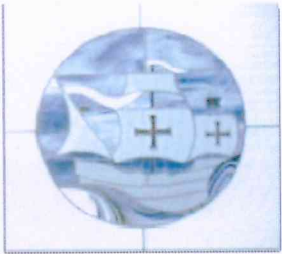




6. UNIQUE OPPORTUNITIES

- 100% recycled
- 100% recycled
- 100% recycled
- 100% recycled
- 100% recycled
- 100% recycled
- 100% recycled





SUMMARY

- Focus on achieving raw material efficiency particularly with Chromium.
- Key global products and key sectors focus.
- Ferritic end user expertise.
- Flexible, competitive and quality-focused operation.
- Aligned with ferritic migration due to Nickel volatility.



A Sustainable Business Plan

Thank you very much



**COLUMBUS
STAINLESS**
—(Pty) Ltd—

