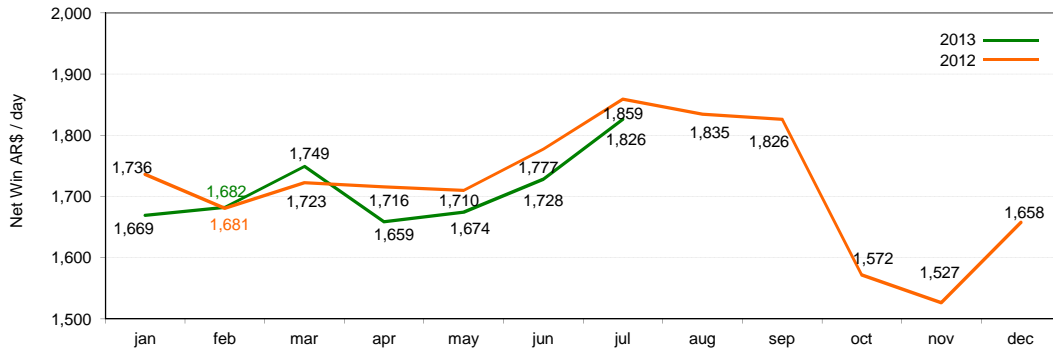


Key Operating Data Monthly Report - July 2013

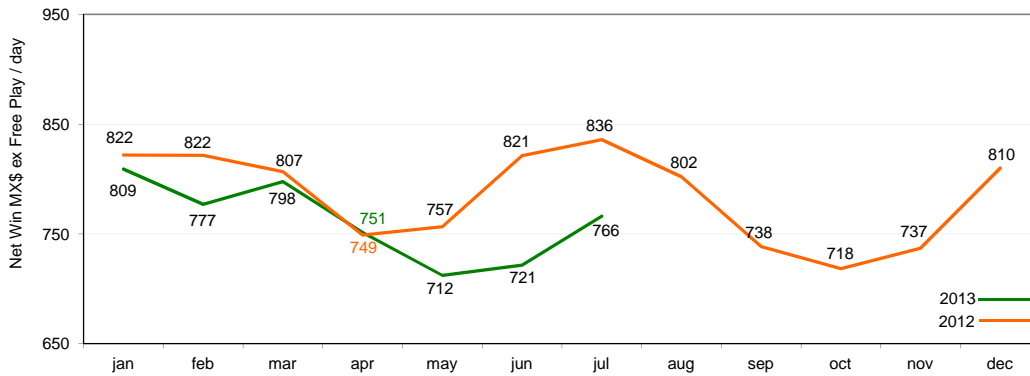
Argentina



| Net Win € per Seat / Day | | jan | feb | mar | apr | may | jun | jul | aug | sep | oct | nov | dec |
|--------------------------|--|-------|-------|-------|-------|-------|-------|-------|-------|-------|-------|-------|-------|
| 2013 | | 252.1 | 251.4 | 264.9 | 245.5 | 246.1 | 244.1 | 254.8 | | | | | |
| 2012 | | 310.6 | 291.5 | 299.1 | 295.8 | 301.5 | 314.4 | 331.9 | 319.8 | 301.3 | 255.3 | 247.1 | 257.4 |
| 2013 YTD | | 252.1 | 251.9 | 256.4 | 253.6 | 252.0 | 250.6 | 251.3 | | | | | |
| 2012 YTD | | 310.6 | 301.1 | 300.4 | 299.2 | 299.7 | 302.2 | 306.6 | 308.3 | 307.5 | 302.1 | 297.0 | 293.5 |

| # of Machine Seats | | jan | feb | mar | apr | may | jun | jul | aug | sep | oct | nov | dec |
|--------------------|--|-------|-------|-------|-------|-------|-------|-------|-------|-------|-------|-------|-------|
| 2013 | | 5,880 | 5,880 | 5,893 | 6,177 | 6,243 | 6,255 | 6,264 | | | | | |
| 2012 | | 5,279 | 5,490 | 5,566 | 5,566 | 5,566 | 5,626 | 5,626 | 5,690 | 5,772 | 5,771 | 5,769 | 5,856 |

Mexico



| Net Win € ex free play per Seat / Day | | jan | feb | mar | apr | may | jun | jul | aug | sep | oct | nov | dec |
|---------------------------------------|--|------|------|------|------|------|------|------|------|------|------|------|------|
| 2013 | | 47.9 | 45.7 | 48.9 | 47.3 | 44.5 | 41.9 | 45.9 | | | | | |
| 2012 | | 47.7 | 48.3 | 47.7 | 43.6 | 43.4 | 47.1 | 51.0 | 48.9 | 44.1 | 42.9 | 43.9 | 47.9 |
| 2013 YTD | | 47.9 | 46.9 | 47.5 | 47.5 | 46.9 | 46.1 | 46.1 | | | | | |
| 2012 YTD | | 47.7 | 48.0 | 47.9 | 46.8 | 46.1 | 46.3 | 47.0 | 47.2 | 46.9 | 46.5 | 46.2 | 46.4 |

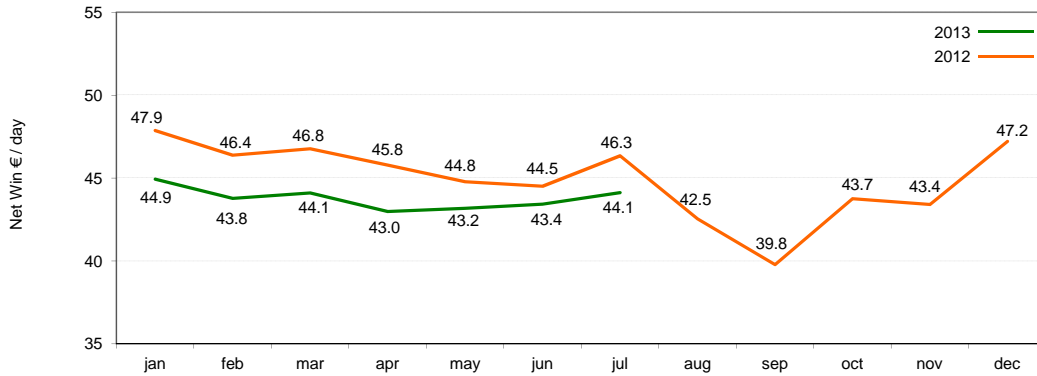
We have added the net win ex free play as we believe it provides a more meaningful measure of net consumer spending. Free Play represents a promotional tool which provides extra gaming time to customers.

| # of Machine Seats | | jan | feb | mar | apr | may | jun | jul | aug | sep | oct | nov | dec |
|--------------------|--|--------|--------|--------|--------|--------|--------|--------|--------|--------|--------|--------|--------|
| 2013 | | 18,707 | 17,100 | 16,747 | 16,845 | 16,649 | 16,952 | 16,992 | | | | | |
| 2012 | | 19,527 | 19,676 | 19,769 | 19,677 | 19,521 | 19,208 | 19,320 | 19,339 | 19,522 | 19,609 | 19,408 | 19,222 |

The net wins and machines for 2013 are adjusted to exclude the halls which have been temporarily closed as a result of the inspections of the sector being conducted by the government



Spain



AWP machines: Net Win € per Seat / Day

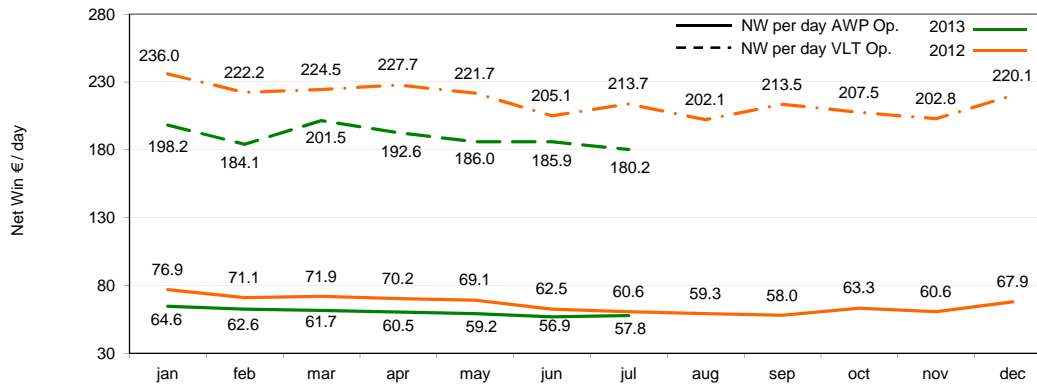
| | jan | feb | mar | apr | may | jun | jul | aug | sep | oct | nov | dec |
|----------|------|------|------|------|------|------|------|------|------|------|------|------|
| 2013 YTD | 44.9 | 44.4 | 44.3 | 44.0 | 43.8 | 43.7 | 43.8 | | | | | |
| 2012 YTD | 47.9 | 47.1 | 47.0 | 46.7 | 46.3 | 46.0 | 46.1 | 45.6 | 45.0 | 44.9 | 44.7 | 44.9 |

AWP machines: # of Machine Seats

| | jan | feb | mar | apr | may | jun | jul | aug | sep | oct | nov | dec |
|------|--------|--------|--------|--------|--------|--------|--------|--------|--------|--------|--------|--------|
| 2013 | 11,808 | 11,808 | 11,809 | 11,480 | 11,479 | 11,472 | 11,395 | | | | | |
| 2012 | 12,449 | 12,437 | 12,447 | 12,399 | 12,402 | 12,233 | 12,226 | 12,218 | 12,218 | 12,192 | 12,192 | 12,188 |

Includes AWP's placed primarily in non-specialized locations (i.e. bars), sport betting locations and bingo halls.

Italy



AWP Machines in Operation - Net Win per Seat € / Day

| | jan | feb | mar | apr | may | jun | jul | aug | sep | oct | nov | dec |
|----------|------|------|------|------|------|------|------|------|------|------|------|------|
| 2013 YTD | 64.6 | 63.7 | 63.0 | 62.4 | 61.7 | 60.9 | 60.5 | | | | | |
| 2012 YTD | 76.9 | 74.1 | 73.4 | 72.6 | 71.8 | 70.0 | 68.2 | 66.9 | 65.7 | 65.4 | 64.9 | 65.2 |

AWP: # of Machines Seats

| | jan | feb | mar | apr | may | jun | jul | aug | sep | oct | nov | dec |
|------|-------|-------|-------|-------|-------|-------|-------|-------|-------|-------|-------|-------|
| 2013 | 6,842 | 6,827 | 6,893 | 6,942 | 6,974 | 7,013 | 6,977 | | | | | |
| 2012 | 5,105 | 5,141 | 5,060 | 5,098 | 5,162 | 7,169 | 7,138 | 7,107 | 7,003 | 6,976 | 6,949 | 6,907 |

Includes AWP's placed primarily in non-specialized locations (i.e. bars) as well as in bingo halls.

VLT Machines in Operation - Net Win per Seat € / Day

| | jan | feb | mar | apr | may | jun | jul | aug | sep | oct | nov | dec |
|----------|-------|-------|-------|-------|-------|-------|-------|-------|-------|-------|-------|-------|
| 2013 YTD | 198.2 | 191.3 | 194.9 | 194.3 | 192.5 | 191.4 | 189.8 | | | | | |
| 2012 YTD | 236.0 | 229.3 | 227.6 | 227.6 | 226.4 | 222.8 | 221.5 | 219.0 | 218.4 | 217.2 | 215.8 | 216.2 |

VLT: # of Machines Seats

| | jan | feb | mar | apr | may | jun | jul | aug | sep | oct | nov | dec |
|------|-------|-------|-------|-------|-------|-------|-------|-------|-------|-------|-------|-------|
| 2013 | 1,169 | 1,208 | 1,175 | 1,212 | 1,239 | 1,219 | 1,232 | | | | | |
| 2012 | 988 | 989 | 1,036 | 1,030 | 1,040 | 1,025 | 1,029 | 1,035 | 1,048 | 1,073 | 1,133 | 1,157 |

Includes VLTs placed at premises (i.e. bingo and machine halls) owned by Codere as well as those belonging to third parties.



About Codere:

Codere is a leading gaming company engaged in the management of slot machines, gaming halls, casinos, racetracks and betting locations in Latin America, Italy and Spain.

Codere S.A.
Avda. de Bruselas, 26
28118 Alcobendas (Madrid), Spain

Investor Relations
+34 91 354 28 19
investor@codere.com
www.codere.com

This document does not constitute or form part of, and should not be construed as, any offer or invitation to subscribe for, underwrite or otherwise acquire, any securities of Codere SA or any of its affiliates nor should it or any part of it form the basis of, or be relied on in connection with, any contract to purchase any securities of Codere SA or any of its affiliates or any commitment whatsoever.

Data included in this report is preliminary and subject to change. While every attempt is made to ensure the report is complete and accurate, final figures will be contained in the corresponding quarterly reports.