

# **Production Facilities Project at the Margarita Field**

**UN Bolivia NOA**

**August 2003**

*Safe harbor statement under the Private Securities Litigation Reform Act of 1995:*

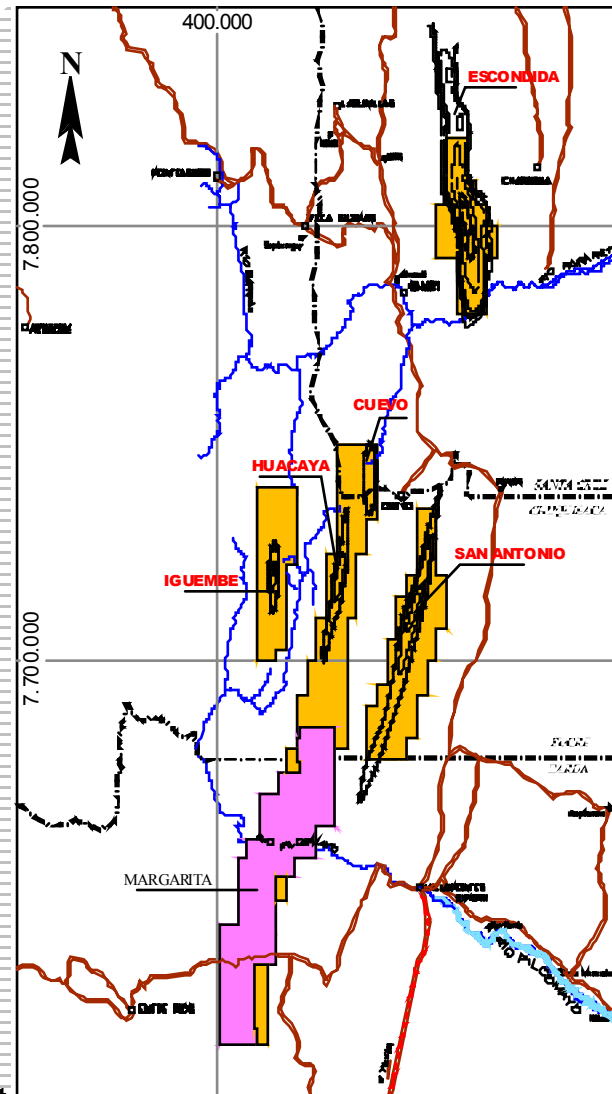
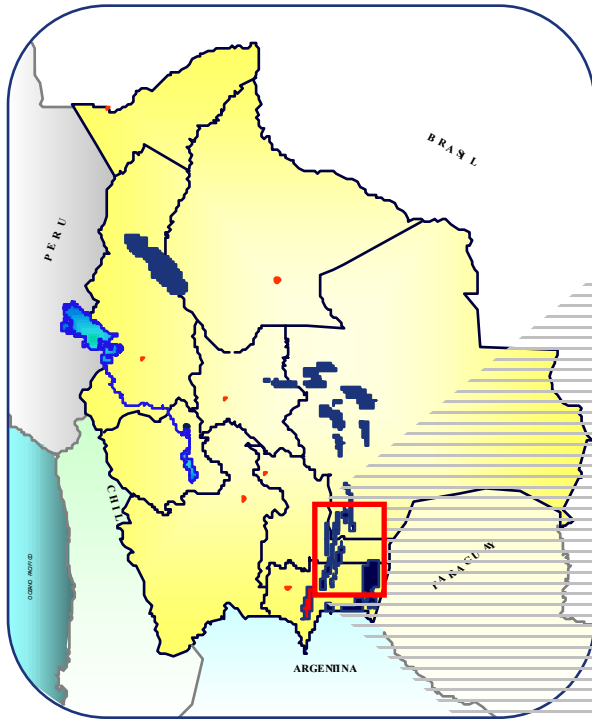
*This document contains statements that Repsol YPF believes constitute forward-looking statements within the meaning of the Private Securities Litigation Reform Act of 1995. These forward-looking statements may include statements regarding the intent, belief or current expectations of Repsol YPF and its management, including with respect to trends affecting Repsol YPF's financial condition, results of operations, business, strategy, production volume and reserves, as well as Repsol YPF's plans with respect to capital expenditures and investments. These statements are not guarantees of future performance and are subject to material risks, uncertainties, changes and other factors which may be beyond Repsol YPF's control or may be difficult to predict.*

*Repsol YPF's future financial condition, results of operations, business, strategy, production volumes, reserves, capital expenditures and investments could differ materially from those expressed or implied in any such forward-looking statements. Such factors include, but are not limited to, currency fluctuations, the price of petroleum products, the ability to realize cost reductions and operating efficiencies without unduly disrupting business operations, environmental and regulatory considerations and general economic and business conditions, as well as those factors described in the filings made by Repsol YPF and its affiliates with the Comisión Nacional del Mercado de Valores in Spain, the Comisión Nacional de Valores in Argentina and the Securities and Exchange Commission in the United States; in particular, those described in Section 1.3 "Key Information about Repsol YPF—Risk Factors" and Section 3 "Operating and Financial Review and Prospects" in Repsol YPF's annual report on Form 20-F for the fiscal year ended December 31, 2002 filed with the Securities and Exchange Commission.*

*Repsol YPF does not undertake to publicly update or revise these forward looking statements even if experience or future changes make it clear that the projected results or condition expressed or implied therein will not be realized.*

- The Margarita Field is located at the Caipependi Block, in the state of Tarija, Bolivia.
- The following companies participate in this joint venture:
  - Repsol-YPF (Maxus): 37.5%
  - BG-Bolivia 37.5%
  - Pan American Energy: 25%
- The block is operated by Repsol-YPF
- The Margarita field was opened for commercial purposes on May 1999 and, in accordance with the Hydrocarbon Law, should start production in 2004 to meet the quota of gas sales to Brazil awarded to the field.

# MAP OF THE BLOCK'S LOCATION



- The EPF-Margarita project contemplates the following scope:
  - Flow lines from the well to the plant
  - EPF facilities for the treatment of gas and liquids
  - Export lines for liquids and gas.
  - EPF camp.
  - EPF operations and maintenance

**EPF: Early production facilities**

# TECHNICAL ASPECTS

## Construction alternative

### FLOW LINES

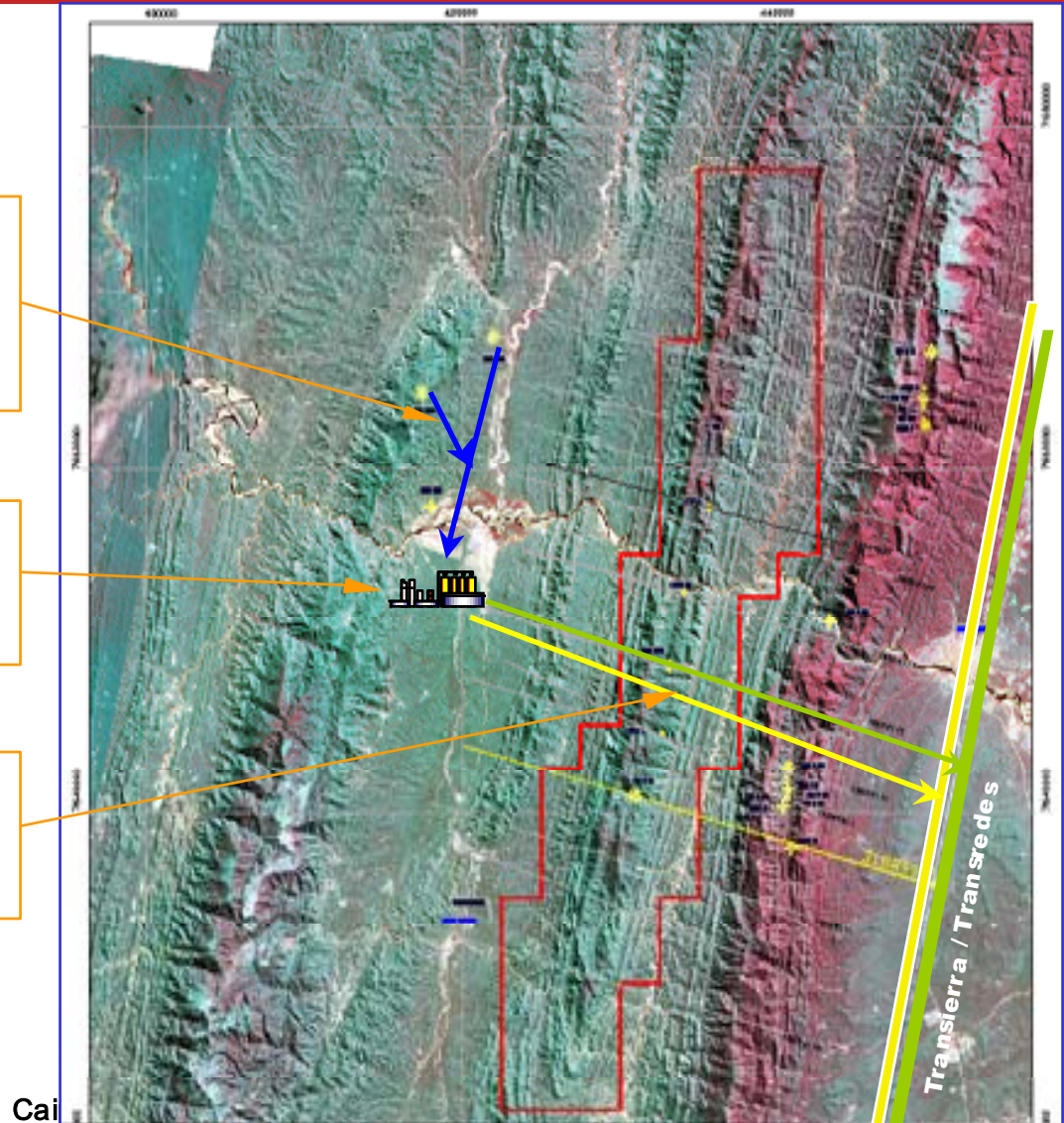
- MRG-X3
- MRG-X1
- MRG-X4

### FACILITIES

- Treatment plant
- Camp

### Export lines

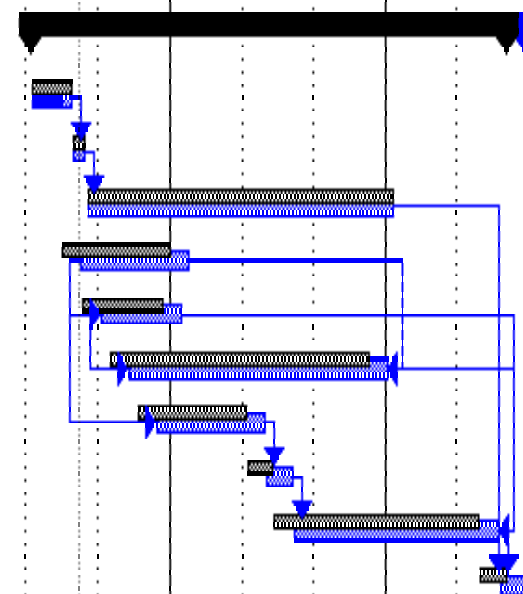
- Gas 10", 51km
- Cond. 6", 54km



## EXPENDITURES

DESCRIPCION		M\$US
X1-X3 FLOW LINE		4.429
EPF PLANT		23.381
EXPORT LINES		18.318
MANAGEMENT		2.771
CONTINGENCIES		0.431
OTHER		5.442
TOTAL		54.772

Id	Task	Duración	Start	End	1er trimestre			3er trimestre			1er trimestre		
					ene	mar	may	jul	sep	nov	ene	mar	may
1													
2													
3	<b>PROJECT EXECUTION - MARGARITA GTP OPTION</b>	<b>361 días</b>	<b>mié 05/03/03</b>	<b>mié 28/04/04</b>									
4	<u>GTP - Select EPC Contractor</u>	6 sems	mié 05/03/03	mar 08/04/03									
5	Negotiate LOI with GTP Contractor	2 sems	mié 09/04/03	sáb 19/04/03									
6	Engr/Procurement/Constr. By GTP Contractor	45 sems	lun 21/04/03	mié 07/01/04									
7	<u>P/L, F/L &amp; Wellhead - Basic Engineering (EPFM)</u>	16 sems	mié 16/04/03	jue 17/07/03									
8	RFQ's / PO's (Repsol)	12 sems	sáb 03/05/03	vie 11/07/03									
9	Fabricate/Deliver P/L, F/L & WH Materials	38 sems	mar 27/05/03	vie 02/01/04									
10	Select Pipeline/Wellhead Construction Contractor	16 sems	jue 19/06/03	vie 19/09/03									
11	Mobilize P/L, F/L & WH Contractor	4 sems	sáb 20/09/03	lun 13/10/03									
12	Pipeline Construction	30 sems	mar 14/10/03	lun 05/04/04									
13	System Commissioning and Start-up	20 días	mar 06/04/04	mié 28/04/04									





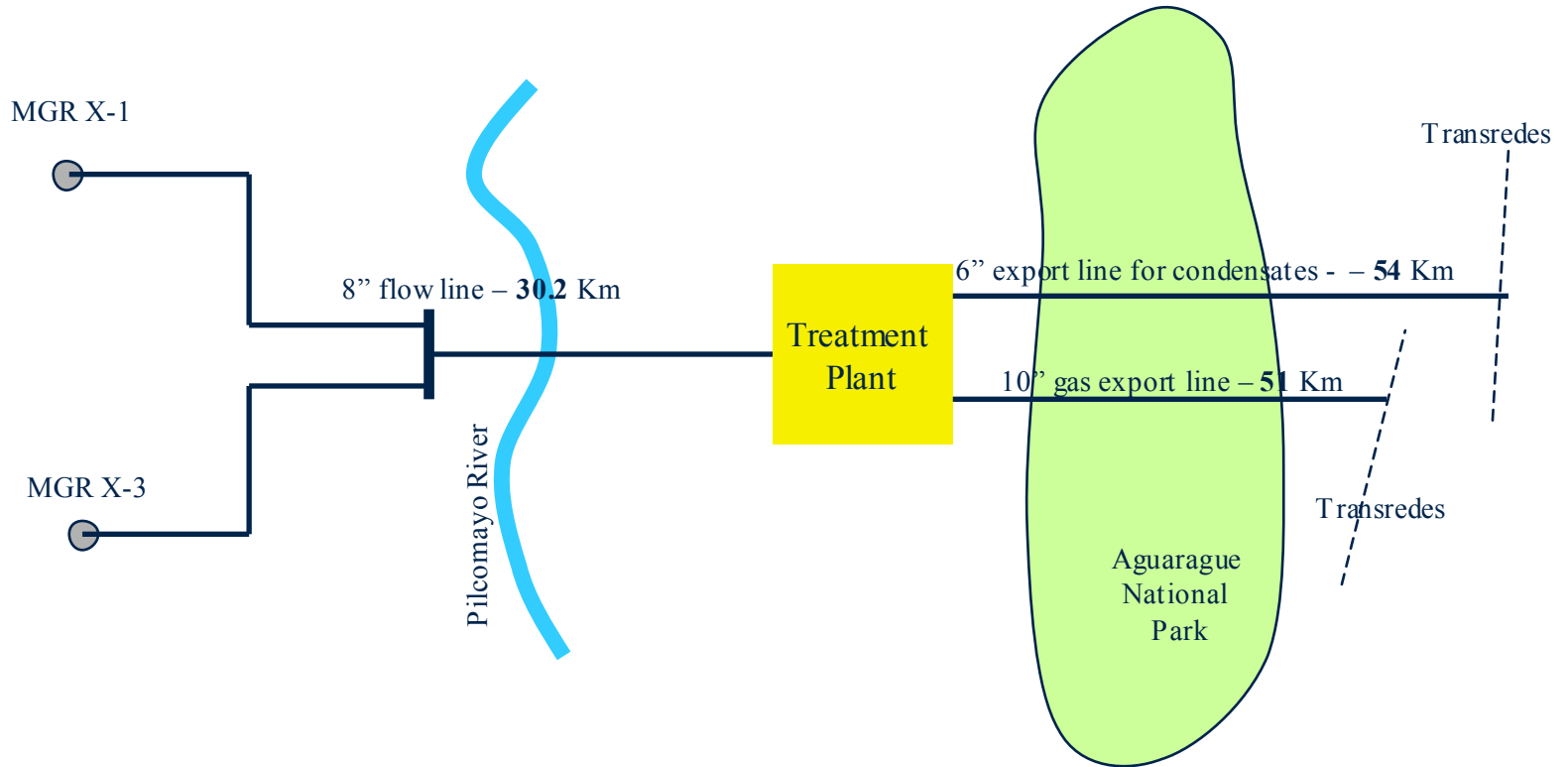
# **MARGARITA FIELD FLOW LINE AND EXPORT LINES**

- **FLOW LINE :**
  - **Installation of MGT-X1, X3 well flow lines**
  - **Line diameter: 8" .**
  - **Distance: 30.2 Km**
  - **Objective: deliver well production to the Plant**
  - **The layout of the lines contemplates crossing the Pilcomayo River and other smaller streams.**

## ■ EXPORT LINES

- Installation of gas and liquids lines from the Plant to the gas pipeline and to the Transportadora Transredes oil pipeline.
- A 51 km, 10” line for gas.
- A 54 km, 6” line for condensates
- Objective: transport gas and liquids for marketing
- The layout of the export lines cross the Aguaragüey and Caipipendi mountain ranges.
- The scope includes the construction of significant erosion control projects.

# Technical Aspects (II)



- Based on a technical-financial evaluation, the project for laying of the flow lines and export lines at the Margarita field has been awarded to:
  - Consortium                      Astra Evangelista – Conduto
  - Total                                \$ 15,828,185 incl. V.A.T.
  - Execution period              180 days

## ■ Progress

- |                        |                     |
|------------------------|---------------------|
| ■ Line Pipe            | Awarded to Tenaris. |
| ■ Basic engineering    | 50 %                |
| ■ Detailed engineering | 5 %                 |
| ■ Mobilization         | 85 %                |

# **TEMPRANA MARGARITA PRODUCTION FACILITIES**

## **TREATMENT PLANT**

- The plant was designed with a 2Mm<sup>3</sup>/d treatment capacity
- The process system is based on a propane-driven mechanical cooling system to adapt to commercial gas specifications.
- The main feature is its ability to handle different process flows with a 6 to 1 relationship.



- Based on the technical-financial evaluation carried out, construction of the plant was awarded to:
  - Consortium EBN
  - Total \$ 26,874,547 incl. V.A.T.
  - Execution 10 months
  
- Plant operations were awarded to:
  - Company NCD
  - Total \$ 167,800 /month
  - Timetable 4 years

## ■ Progress

- Basic engineering 100 %
- Detailed engineering 50 %
- Movilización 100 %
- Site clearing 80 %