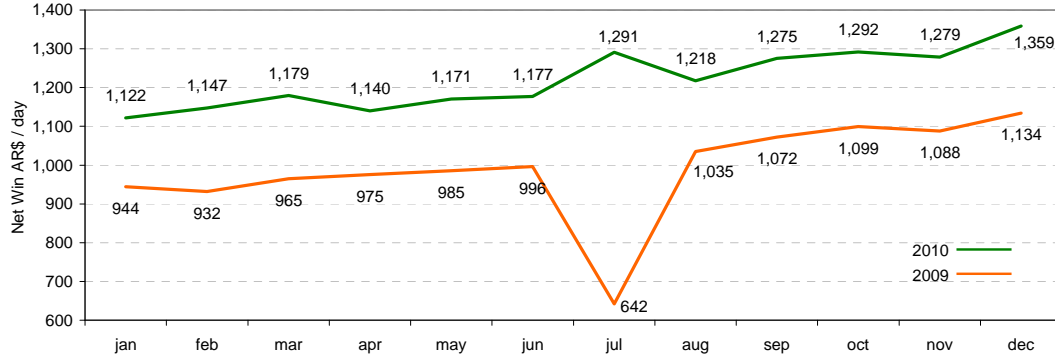




# Key Operating Data Monthly Report - December 2010

## Argentina

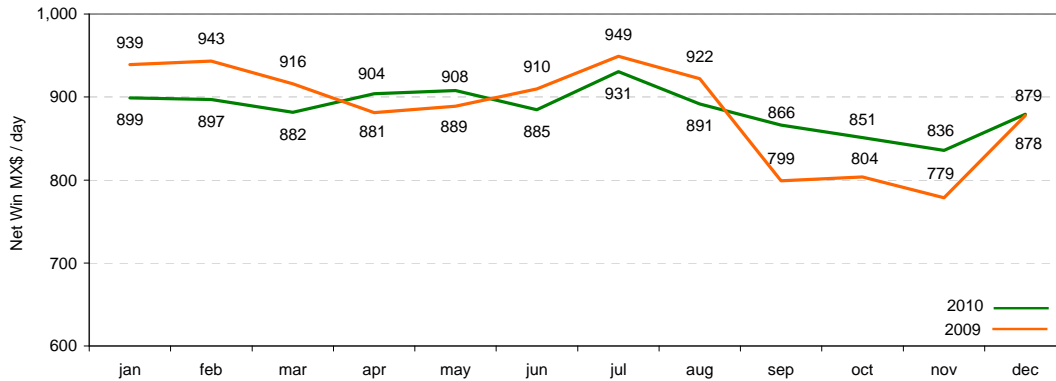


Net Win €/ Day		jan	feb	mar	apr	may	jun	jul	aug	sep	oct	nov	dec
2010		207.3	219.0	225.0	219.2	240.3	245.5	256.1	240.8	245.4	235.0	237.9	258.4
2009		202.2	206.1	200.1	199.3	193.2	188.0	119.5	188.6	191.2	194.2	191.4	205.6
2010 YTD		207.3	212.9	217.1	217.6	222.2	226.1	230.6	231.9	233.5	233.6	234.0	236.2
2009 YTD		202.2	204.1	202.7	201.9	200.1	198.1	186.6	186.9	187.3	188.0	188.3	189.8

# of Machine Seats		jan	feb	mar	apr	may	jun	jul	aug	sep	oct	nov	dec
2010		4,675	4,716	4,726	4,726	4,734	4,796	4,829	4,981	5,042	5,043	5,043	5,043
2009		4,481	4,481	4,479	4,479	4,479	4,479	4,479	4,479	4,475	4,465	4,545	4,679

July 2009 affected by hall closures due to de H1N1 virus

## Mexico



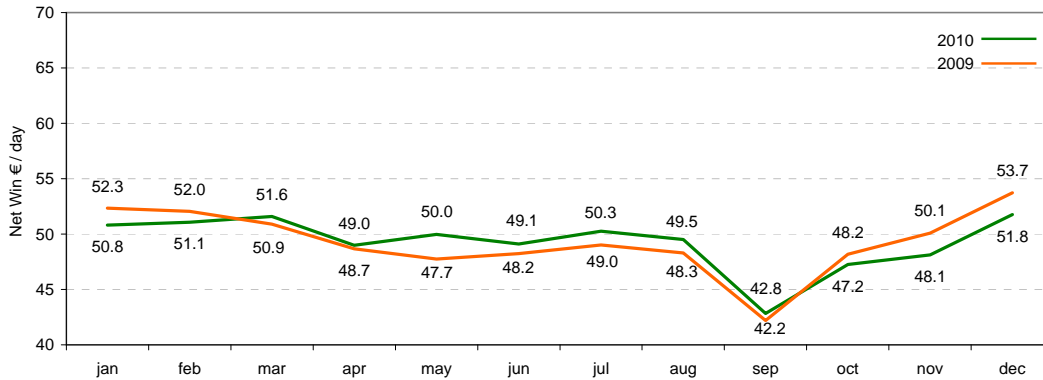
Net Win €/ Day		jan	feb	mar	apr	may	jun	jul	aug	sep	oct	nov	dec
2010		49.4	51.0	51.9	55.1	56.8	56.8	56.6	54.3	51.5	49.1	50.0	53.6
2009		50.7	50.8	47.8	49.3	48.9	48.6	50.5	49.5	40.7	41.1	39.9	46.6
2010 YTD		49.4	50.1	50.8	53.1	52.5	53.3	53.8	53.8	53.6	53.1	52.8	52.9
2009 YTD		50.7	50.8	49.7	49.6	49.5	49.3	49.5	49.5	48.5	47.7	47.0	47.0

# of Machine Seats		jan	feb	mar	apr	may	jun	jul	aug	sep	oct	nov	dec
2010		17,242	17,396	17,600	17,827	18,224	18,292	18,244	18,441	18,953	19,061	19,007	19,299
2009		16,476	16,523	16,688	10,464	16,983	17,157	17,116	17,224	17,155	17,279	17,346	17,421

As a result of the Caliente Agreements signed on July 16, 2010 data shown for the Caliente part of our Mexican Operations corresponds only to the halls included in these new agreements. Data for 2009 and 2010 has also been adjusted to reflect this change. April and May 2009 affected by hall closures due to the H1N1 virus



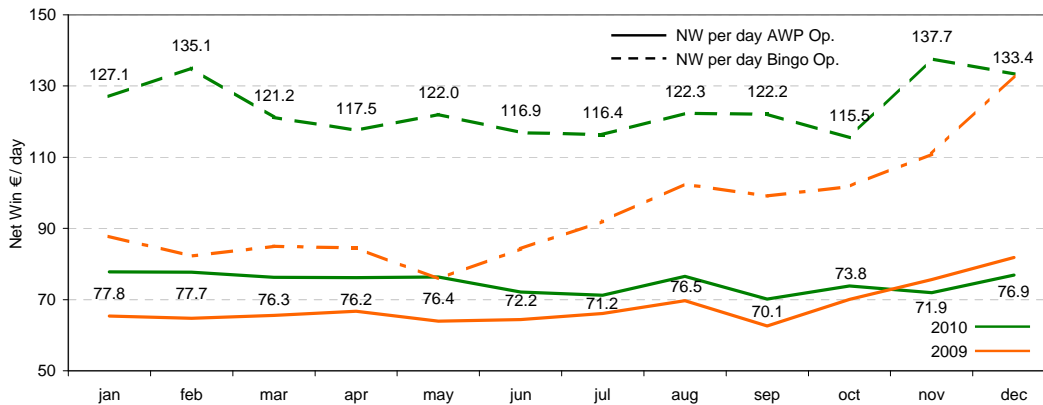
### Spain AWP



Net Win €/ Day		jan	feb	mar	apr	may	jun	jul	aug	sep	oct	nov	dec
2010 YTD		50.8	50.9	51.2	50.6	50.5	50.3	50.3	50.2	49.2	49.0	49.0	49.2
2009 YTD		52.3	52.2	51.8	51.0	50.3	50.0	49.8	49.7	48.7	48.7	48.8	49.2

# of Machines		jan	feb	mar	apr	may	jun	jul	aug	sep	oct	nov	dec
2010		15,255	15,263	15,269	15,272	15,278	15,280	15,286	15,291	15,292	15,291	15,346	15,347
2009		15,585	15,590	15,590	15,588	15,593	15,569	15,583	15,584	15,586	15,594	15,596	15,587

### Italy



Machines in AWP - Net Win €/ Day		jan	feb	mar	apr	may	jun	jul	aug	sep	oct	nov	dec
2010 YTD		77.8	77.7	77.2	76.9	76.8	76.0	75.3	75.5	74.8	74.7	74.4	74.6
2009 YTD		65.3	65.0	65.4	65.6	65.3	65.1	65.3	65.7	65.3	65.8	66.6	67.8

# of Machines in AWP Operation		jan	feb	mar	apr	may	jun	jul	aug	sep	oct	nov	dec
2010		1,692	1,724	1,745	1,747	1,738	1,787	1,798	1,802	1,801	1,806	1,762	1,698
2009		1,749	1,748	1,753	1,760	1,722	1,734	1,760	1,748	1,745	1,682	1,641	1,688

Machines in Bingo Operation - Net Win €/ Day		jan	feb	mar	apr	may	jun	jul	aug	sep	oct	nov	dec
2010 YTD		127.1	131.1	126.2	125.2	123.6	122.4	121.5	121.6	121.7	120.9	122.6	123.5
2009 YTD		92.0	89.5	89.8	89.9	87.8	87.4	88.2	90.0	91.1	92.3	94.0	97.0

# of Machines in Bingo Operation		jan	feb	mar	apr	may	jun	jul	aug	sep	oct	nov	dec
2010		500	498	513	499	497	545	553	553	569	682	567	480
2009		535	525	532	553	569	570	544	551	586	567	551	493



About Codere:

Codere is a leading gaming company engaged in the management of machines, bingo halls, casinos, racetracks and betting locations in Spain, Latin America and Italy.

Codere S.A.  
Avda. de Bruselas, 26  
28108 Alcobendas (Madrid), Spain

Investor Relations  
+34 91 354 28 19  
[investor@codere.com](mailto:investor@codere.com)  
[www.codere.com](http://www.codere.com)

*This document does not constitute or form part of, and should not be construed as, any offer or invitation to subscribe for, underwrite or otherwise acquire, any securities of Codere SA or any of its affiliates nor should it or any part of it form the basis of, or be relied on in connection with, any contract to purchase any securities of Codere SA or any of its affiliates or any commitment whatsoever.*

*Data included in this report is preliminary and subject to change. While every attempt is made to ensure the report is complete and accurate, final figures will be contained in the corresponding quarterly reports.*