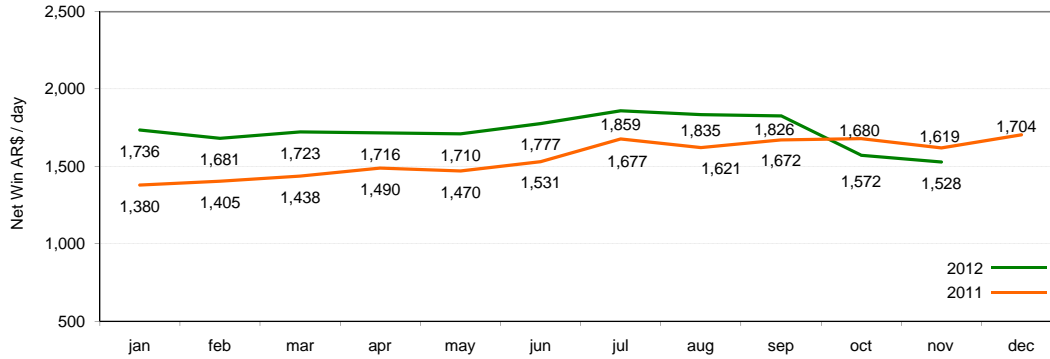




# Key Operating Data Monthly Report - November 2012

## Argentina



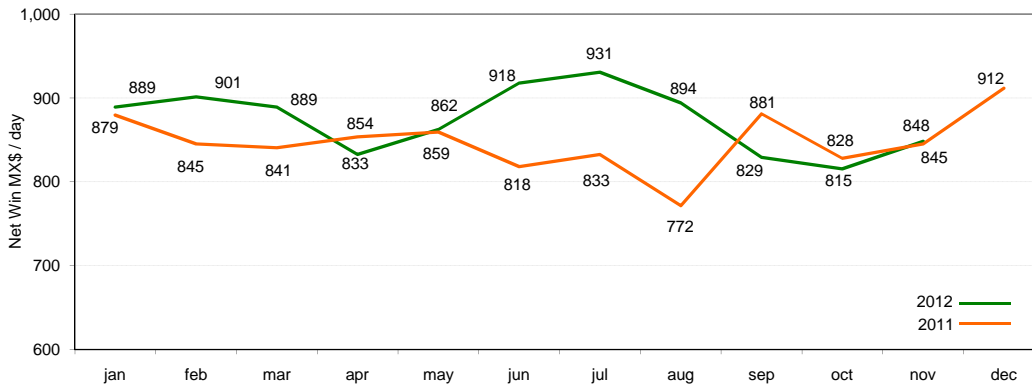
Net Win €per Seat / Day

	jan	feb	mar	apr	may	jun	jul	aug	sep	oct	nov	dec
2012	310.6	291.5	299.1	295.8	301.5	314.4	331.9	319.8	301.3	255.3	247.3	
2011	257.5	255.4	253.1	253.0	252.2	259.7	283.6	270.6	289.8	287.0	280.2	301.7
2012 YTD	310.6	301.1	300.4	299.2	299.7	302.2	306.6	308.3	307.5	302.1	297.0	
2011 YTD	257.5	256.5	255.1	254.5	254.0	254.8	259.0	260.5	263.7	266.1	267.3	270.3

# of Machine Seats

	jan	feb	mar	apr	may	jun	jul	aug	sep	oct	nov	dec
2012	5,279	5,490	5,566	5,566	5,566	5,626	5,626	5,690	5,772	5,771	5,769	
2011	5,045	5,053	5,053	5,058	5,067	5,065	5,103	5,108	5,164	5,175	5,177	5,279

## Mexico



Net Win €per Seat / Day

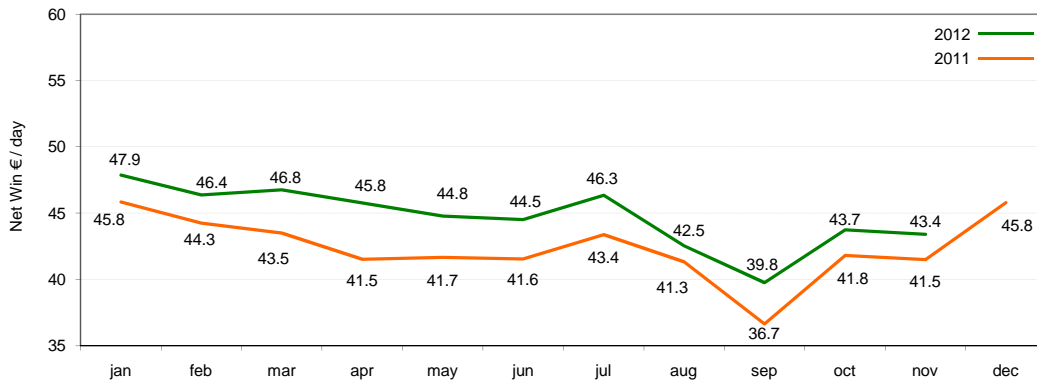
	jan	feb	mar	apr	may	jun	jul	aug	sep	oct	nov	dec
2012	51.6	53.0	52.6	48.4	49.5	52.7	56.8	54.5	49.6	48.7	50.5	
2011	53.7	51.1	49.9	50.2	51.4	48.1	49.9	43.7	49.2	44.7	45.4	50.2
2012 YTD	51.6	52.3	52.4	51.4	51.0	51.3	52.1	52.4	52.1	51.7	51.6	
2011 YTD	53.7	52.4	51.6	51.2	51.3	50.2	50.8	49.8	49.3	49.3	48.9	48.7

# of Machine Seats

	jan	feb	mar	apr	may	jun	jul	aug	sep	oct	nov	dec
2012	19,527	19,676	19,769	19,677	19,521	19,208	19,320	19,339	19,522	19,609	19,408	
2011	19,557	19,601	19,707	19,697	19,742	19,710	19,955	19,017	18,874	19,459	19,316	19,571



## Spain



AWP machines: Net Win € per Seat / Day

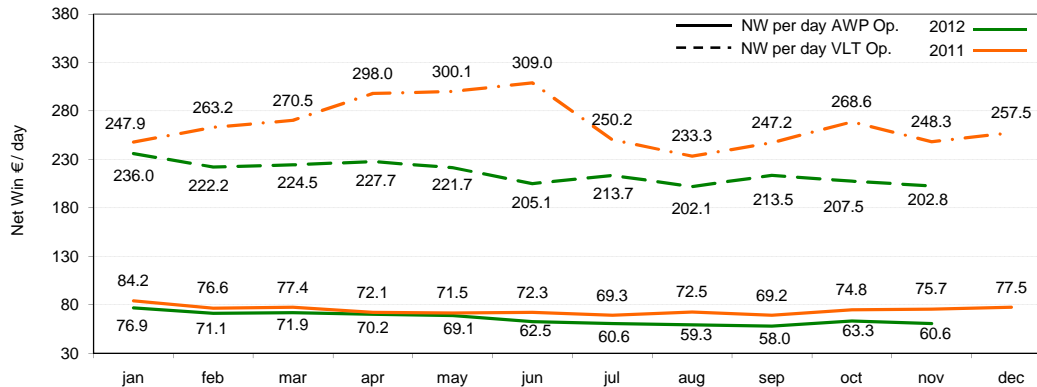
	jan	feb	mar	apr	may	jun	jul	aug	sep	oct	nov	dec
2012 YTD	47.9	47.1	47.0	46.7	46.3	46.0	46.1	45.6	45.0	44.9	44.7	
2011 YTD	45.8	45.1	44.5	43.8	43.3	43.0	43.1	42.9	42.1	42.1	42.0	42.3

AWP machines: # of Machine Seats

	jan	feb	mar	apr	may	jun	jul	aug	sep	oct	nov	dec
2012	12,449	12,437	12,447	12,399	12,402	12,233	12,226	12,218	12,218	12,192	12,192	
2011	15,146	15,157	15,163	15,182	15,182	15,179	15,184	15,185	15,181	14,853	14,677	14,677

Includes AWP's placed primarily in non-specialized locations (i.e. bars), sport betting locations and bingo halls.

## Italy



AWP Machines in Operation - Net Win per Seat € / Day

	jan	feb	mar	apr	may	jun	jul	aug	sep	oct	nov	dec
2012 YTD	76.9	74.1	73.4	72.6	71.8	70.0	68.2	66.9	65.7	65.4	64.9	
2011 YTD	84.2	80.5	79.4	77.6	76.3	75.6	74.4	74.0	73.2	73.4	73.7	74.1

AWP: # of Machines Seats

	jan	feb	mar	apr	may	jun	jul	aug	sep	oct	nov	dec
2012	5,105	5,141	5,060	5,098	5,162	7,169	7,138	7,107	7,003	6,976	6,949	
2011	2,714	2,650	2,674	2,691	2,696	2,765	3,989	5,032	5,168	5,196	5,182	5,138

Includes AWP's placed primarily in non-specialized locations (i.e. bars) as well as in bingo halls.

2011 figures include Gap Games consolidated beginning July 2011 and Gaming Re consolidated beginning August 2011.

2012 figures include Dalla Pria consolidated beginning June 2012

VLT Machines in Operation - Net Win per Seat € / Day

	jan	feb	mar	apr	may	jun	jul	aug	sep	oct	nov	dec
2012 YTD	236.0	229.3	227.6	227.6	226.4	222.8	221.5	219.0	218.4	217.2	215.8	
2011 YTD	247.9	255.5	261.0	271.1	277.6	283.4	277.2	270.1	267.0	267.2	265.0	264.1

VLT: # of Machines Seats

	jan	feb	mar	apr	may	jun	jul	aug	sep	oct	nov	dec
2012	988	989	1,036	1,030	1,040	1,025	1,029	1,035	1,048	1,073	1,133	
2011	508	520	570	582	592	689	770	752	762	775	903	962

Includes VLTs placed at premises (i.e. bingo and machine halls) owned by Codere as well as those belonging to third parties.



About Codere:

Codere is a leading gaming company engaged in the management of slot machines, gaming halls, casinos, racetracks and betting locations in Latin America, Italy and Spain.

Codere S.A.  
Avda. de Bruselas, 26  
28118 Alcobendas (Madrid), Spain

Investor Relations  
+34 91 354 28 19  
[investor@codere.com](mailto:investor@codere.com)  
[www.codere.com](http://www.codere.com)

*This document does not constitute or form part of, and should not be construed as, any offer or invitation to subscribe for, underwrite or otherwise acquire, any securities of Codere SA or any of its affiliates nor should it or any part of it form the basis of, or be relied on in connection with, any contract to purchase any securities of Codere SA or any of its affiliates or any commitment whatsoever.*

*Data included in this report is preliminary and subject to change. While every attempt is made to ensure the report is complete and accurate, final figures will be contained in the corresponding quarterly reports.*