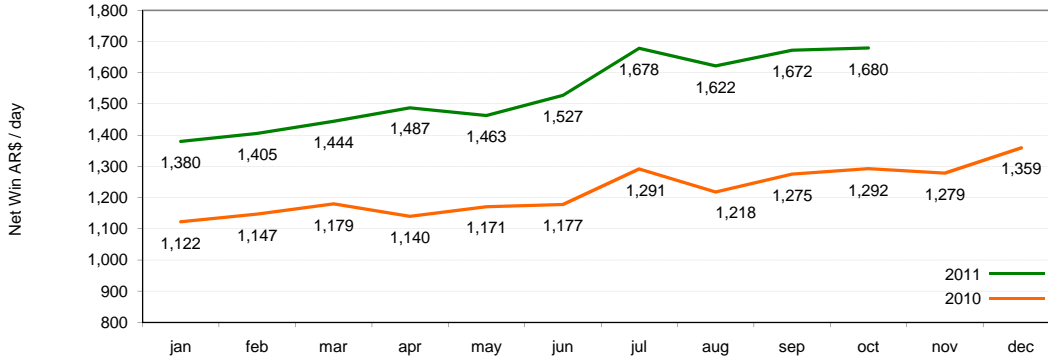




Key Operating Data Monthly Report - October 2011

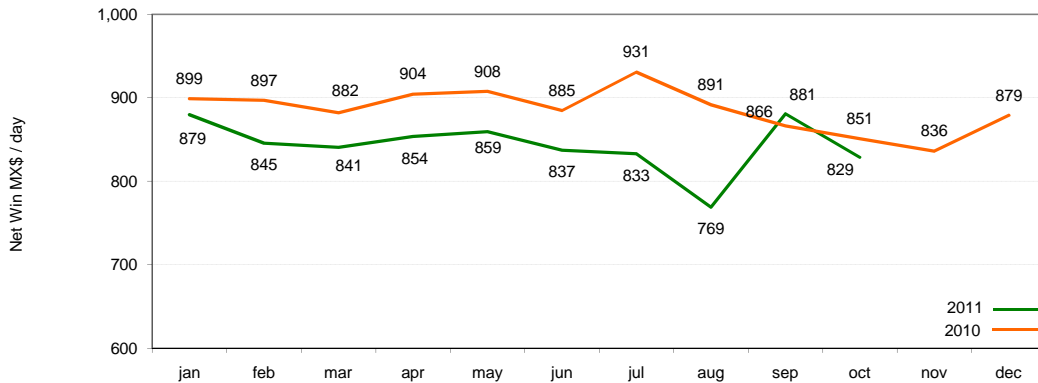
Argentina



| | jan | feb | mar | apr | may | jun | jul | aug | sep | oct | nov | dec |
|----------|-------|-------|-------|-------|-------|-------|-------|-------|-------|-------|-------|-------|
| 2011 | 257.5 | 255.4 | 254.2 | 252.6 | 251.0 | 259.1 | 283.7 | 270.7 | 289.8 | 287.0 | | |
| 2010 | 207.3 | 219.0 | 225.0 | 219.2 | 240.3 | 245.5 | 256.1 | 240.8 | 245.4 | 235.0 | 237.9 | 258.4 |
| 2011 YTD | 257.5 | 256.5 | 255.4 | 254.6 | 253.8 | 254.6 | 258.9 | 260.3 | 263.6 | 266.0 | | |
| 2010 YTD | 207.3 | 212.9 | 217.1 | 217.6 | 222.2 | 226.2 | 230.6 | 231.9 | 233.5 | 233.6 | 234.0 | 236.2 |

| | jan | feb | mar | apr | may | jun | jul | aug | sep | oct | nov | dec |
|------|-------|-------|-------|-------|-------|-------|-------|-------|-------|-------|-------|-------|
| 2011 | 5,045 | 5,053 | 5,053 | 5,057 | 5,067 | 5,065 | 5,103 | 5,108 | 5,164 | 5,175 | | |
| 2010 | 4,675 | 4,716 | 4,726 | 4,726 | 4,734 | 4,796 | 4,829 | 4,981 | 5,042 | 5,043 | 5,043 | 5,043 |

Mexico



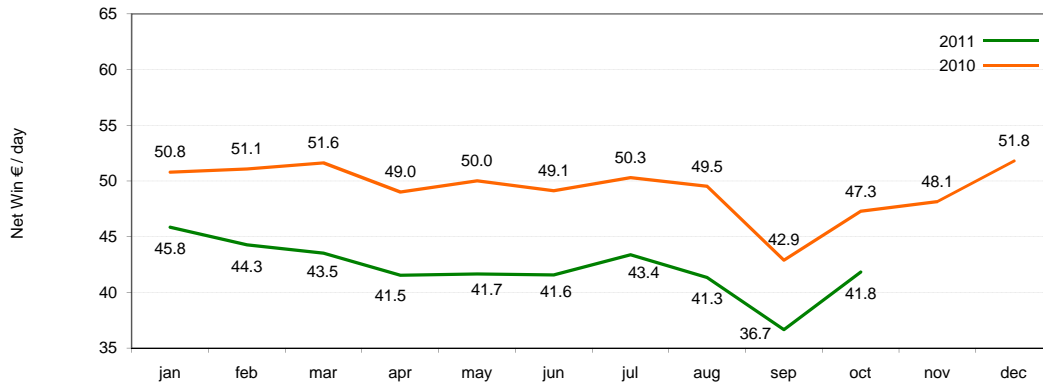
| | jan | feb | mar | apr | may | jun | jul | aug | sep | oct | nov | dec |
|----------|------|------|------|------|------|------|------|------|------|------|------|------|
| 2011 | 53.7 | 51.1 | 49.9 | 50.2 | 51.4 | 49.2 | 49.9 | 43.5 | 49.2 | 44.8 | | |
| 2010 | 49.4 | 51.0 | 51.9 | 55.1 | 56.8 | 56.6 | 54.3 | 54.3 | 51.5 | 49.1 | 50.0 | 53.6 |
| 2011 YTD | 53.7 | 52.4 | 51.6 | 51.2 | 51.3 | 50.9 | 50.8 | 49.8 | 49.8 | 49.3 | | |
| 2010 YTD | 49.4 | 50.1 | 50.8 | 53.1 | 52.5 | 53.3 | 53.8 | 53.8 | 53.6 | 53.1 | 52.8 | 52.9 |

| | jan | feb | mar | apr | may | jun | jul | aug | sep | oct | nov | dec |
|------|--------|--------|--------|--------|--------|--------|--------|--------|--------|--------|--------|--------|
| 2011 | 19,557 | 19,601 | 19,707 | 19,697 | 19,742 | 19,710 | 19,955 | 19,017 | 18,874 | 19,459 | | |
| 2010 | 17,242 | 17,396 | 17,600 | 17,827 | 18,224 | 18,292 | 18,244 | 18,441 | 18,953 | 19,061 | 19,007 | 19,299 |

As a result of the Caliente Agreements signed on July 16, 2010 data shown for the Caliente part of our Mexican operations corresponds only to the halls included in these new agreements. Data from 2010 has also been adjusted to reflect this change.



Spain



AWP machines: Net Win € per Seat / Day

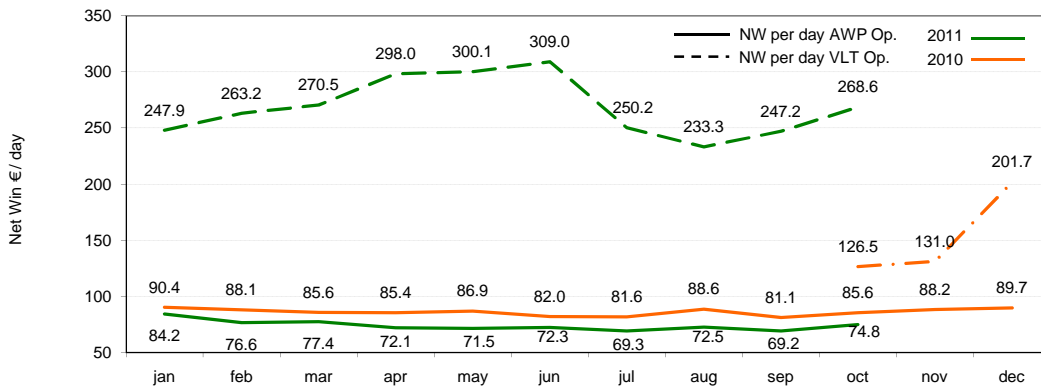
| | jan | feb | mar | apr | may | jun | jul | aug | sep | oct | nov | dec |
|----------|------|------|------|------|------|------|------|------|------|------|------|------|
| 2011 YTD | 45.8 | 45.1 | 44.5 | 43.8 | 43.3 | 43.0 | 43.1 | 42.9 | 42.1 | 42.1 | | |
| 2010 YTD | 50.8 | 50.9 | 51.2 | 50.6 | 50.5 | 50.3 | 50.3 | 50.2 | 49.3 | 49.1 | 49.0 | 49.2 |

AWP machines: # of Machine Seats

| | jan | feb | mar | apr | may | jun | jul | aug | sep | oct | nov | dec |
|------|--------|--------|--------|--------|--------|--------|--------|--------|--------|--------|--------|--------|
| 2011 | 15,146 | 15,157 | 15,165 | 15,182 | 15,182 | 15,179 | 15,182 | 15,185 | 15,182 | 14,858 | | |
| 2010 | 15,285 | 15,300 | 15,307 | 15,311 | 15,317 | 15,320 | 15,327 | 15,334 | 15,340 | 15,337 | 15,392 | 15,399 |

Includes AWP's placed primarily in non-specialized locations (i.e. bars), sport betting locations and bingo halls.

Italy



AWP Machines in Operation - Net Win per Seat € / Day

| | jan | feb | mar | apr | may | jun | jul | aug | sep | oct | nov | dec |
|----------|------|------|------|------|------|------|------|------|------|------|------|------|
| 2011 YTD | 84.2 | 80.5 | 79.4 | 77.6 | 76.3 | 75.6 | 74.4 | 74.0 | 73.2 | 73.4 | | |
| 2010 YTD | 90.4 | 89.3 | 87.9 | 87.3 | 87.2 | 86.3 | 85.6 | 86.0 | 85.4 | 85.4 | 85.7 | 86.0 |

AWP: # of Machines Seats

| | jan | feb | mar | apr | may | jun | jul | aug | sep | oct | nov | dec |
|------|-------|-------|-------|-------|-------|-------|-------|-------|-------|-------|-------|-------|
| 2011 | 2,714 | 2,650 | 2,674 | 2,691 | 2,696 | 2,765 | 3,989 | 5,032 | 5,168 | 5,196 | | |
| 2010 | 2,192 | 2,222 | 2,258 | 2,246 | 2,235 | 2,332 | 2,351 | 2,355 | 2,355 | 2,488 | 2,329 | 2,178 |

Includes AWP's placed primarily in non-specialized locations (i.e. bars) as well as in bingo halls.

2011 figures include Future Games consolidated beginning January 2011, Gap Games consolidated beginning July 2011 and Gaming Re consolidated beginning August 2011.

VLT Machines in Operation - Net Win per Seat € / Day

| | jan | feb | mar | apr | may | jun | jul | aug | sep | oct | nov | dec |
|----------|-------|-------|-------|-------|-------|-------|-------|-------|-------|-------|-------|-------|
| 2011 YTD | 247.9 | 255.5 | 261.0 | 271.1 | 277.6 | 283.4 | 277.2 | 270.1 | 267.0 | 267.2 | | |
| 2010 YTD | | | | | | | | | | 126.5 | 130.4 | 176.2 |

VLT: # of Machines Seats

| | jan | feb | mar | apr | may | jun | jul | aug | sep | oct | nov | dec |
|------|-----|-----|-----|-----|-----|-----|-----|-----|-----|-----|-----|-----|
| 2011 | 508 | 520 | 570 | 582 | 592 | 689 | 770 | 752 | 762 | 775 | | |
| 2010 | | | | | | | | | | 73 | 196 | 402 |

Includes VLTs placed at premises (i.e. bingo and machine halls) owned by Codere as well as those belonging to third parties.



About Codere:

Codere is a leading gaming company engaged in the management of machines, bingo halls, casinos, racetracks and betting locations in Spain, Latin America and Italy.

Codere S.A.
Avda. de Bruselas, 26
28118 Alcobendas (Madrid), Spain

Investor Relations
+34 91 354 28 19
investor@codere.com
www.codere.com

This document does not constitute or form part of, and should not be construed as, any offer or invitation to subscribe for, underwrite or otherwise acquire, any securities of Codere SA or any of its affiliates nor should it or any part of it form the basis of, or be relied on in connection with, any contract to purchase any securities of Codere SA or any of its affiliates or any commitment whatsoever.

Data included in this report is preliminary and subject to change. While every attempt is made to ensure the report is complete and accurate, final figures will be contained in the corresponding quarterly reports.